



Madison, Wisconsin

INDEX OF SHEETS

SHEET NO. D1 DETAIL LINING LIMIT
SHEET NO. P1-P13 UTILITY PLANS

CITY OF MADISON

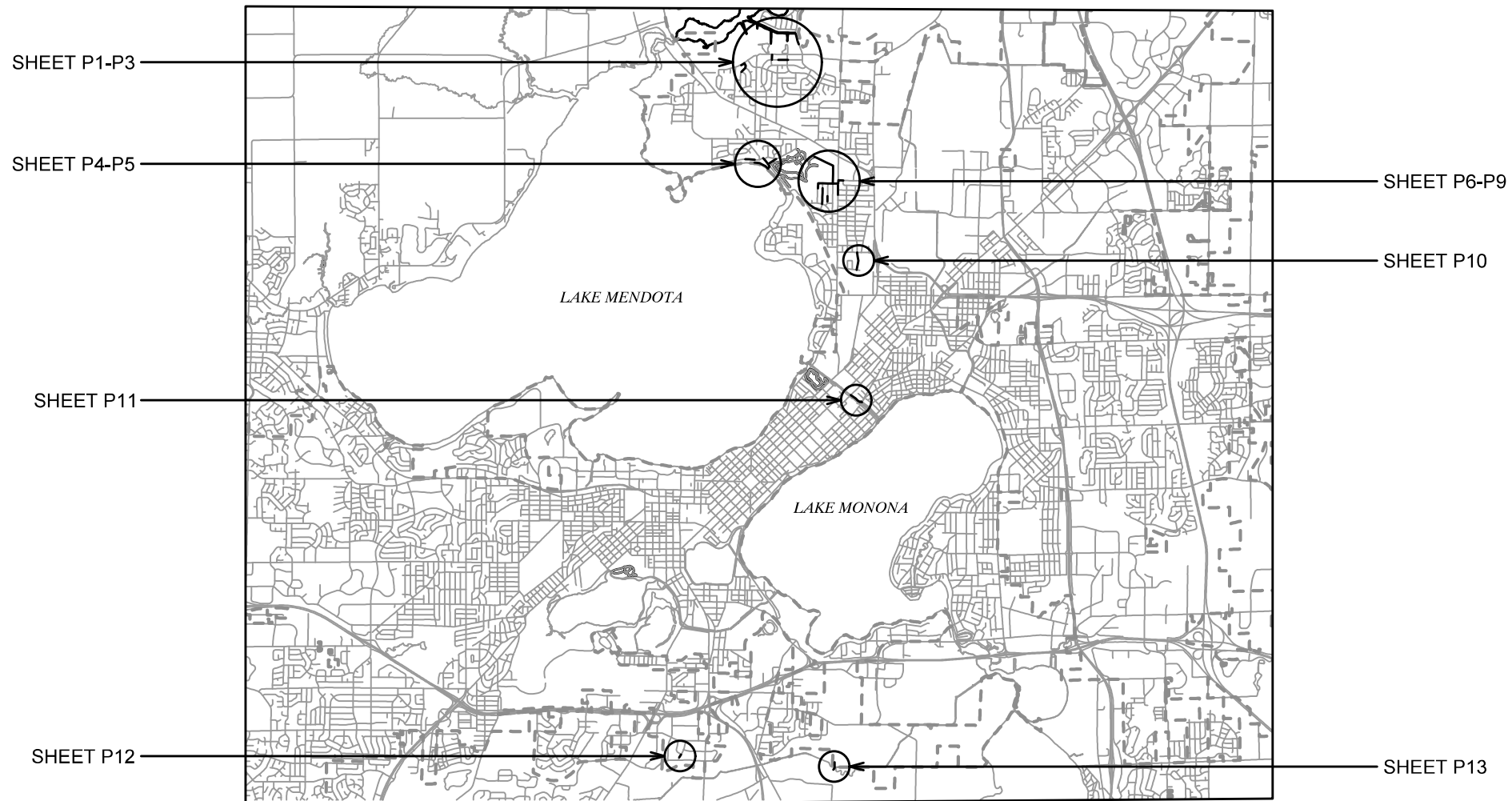
CITY ENGINEERING DIVISION

DEPARTMENT OF PUBLIC WORKS

PLAN OF PROPOSED IMPROVEMENT

CIPP WET LINING REHAB OF SANITARY SEWERS - 2021

CITY PROJECT NO. 13363
CONTRACT NO. 9440



PUBLIC IMPROVEMENT PROJECT APPROVED

FEBRUARY 2, 2021

BY THE COMMON COUNCIL OF MADISON, WISCONSIN

PUBLIC IMPROVEMENT DESIGN APPROVED BY:

N. Greg Fries

Feb 3, 2021

City Engineer

Date

SANITARY SEWER DESIGNED BY:



Feb 3, 2021

PLOT SCALE: 1 IN=1 FT_XREF


PLOT NAME: ---

REV. DATE: 2/2/2021 5:46 PM

ORIGINATOR: CITY_OF_MADISON

SANITARY SEWER

LOCATION	U.S. STRUCT.	D.S. STRUCT.	DIA (IN)	LENGTH (LF)	MATERIAL	LATERALS	SHEET
BONNER LN	SAS5021-012	SAS5020-009	8	340	VP	2	P1
BONNER LN	SAS5020-009	SAS5020-008	8	149	VP	1	P1
BONNER LN	SAS5020-008	SAS5020-007	8	171	VP	3	P1
WHEELER RD	SAS5020-005	SAS5020-004	8	168	VP	2	P1
WHEELER RD	SAS5020-004	SAS5020-007	8	83	VP	0	P1
DEBRA LN	SAS5220-003	SAS5220-004	8	274	VP	6	P2
DEBRA LN	SAS5220-004	SAS5220-005	8	332	VP	6	P2
ILENE LN	SAS5120-006	SAS5120-003	8	325	VP	5	P2
COMANCHE WAY	SAS5218-005	SAS5218-006	12	252	AC	6	P3
COMANCHE WAY	SAS5218-006	SAS5219-001	12	212	AC	5	P3
COMANCHE WAY	SAS5219-002	SAS5219-001	8	233	AC	5	P3
WOODWARD DR	SAS5027-009	SAS5027-011	12	59	RCP	1	P4
WOODWARD DR	SAS5027-011	SAS5027-012	12	178	RCP	3	P4
WOODWARD DR	SAS5027-012	SAS5027-014	12	352	RCP	9	P4
WOODWARD DR	SAS5127-009	SAS5127-010	24	243	RCP	0	P5
WOODWARD DR	SAS5127-010	SAS5127-011	24	235	RCP	1	P5
WOODWARD DR	SAS5127-011	SAS5127-012	36	167	RCP	0	P5
FORSTER DR	SAS5127-012	SAS5227-002	24	432	RCP	0	P5
WOODWARD DR	SAS5027-015	SAS5127-014	8	350	VP	7	P4
WOODWARD DR	SAS5127-014	SAS5127-013	8	163	VP	0	P5
WOODWARD DR	SAS5127-013	SAS5127-015	8	277	VP	1	P5
WOODWARD DR	SAS5127-015	SAS5128-001	8	218	VP	2	P5
WOODWARD DR	SAS5128-001	SAS5127-016	8	178	VP	0	P5
WOODWARD DR	SAS5127-016	SAS5127-011	18	172	RCP	0	P5
WARNER PARK	SAS5327-001	SAS5427-004	24	400	RCP	0	P6
WARNER PARK	SAS5427-004	SAS5427-003	24	393	RCP	0	P6
WARNER PARK	SAS5427-003	SAS5427-002	24	495	RCP	0	P6
WARNER PARK	SAS5427-002	SAS5428-001	24	520	RCP	0	P7
WARNER PARK	SAS5428-001	SAS5429-003	24	512	RCP	0	P7
WARNER PARK	SAS5429-003	SAS5429-008	24	81	RCP	0	P7
WINDOM WAY	SAS5529-002	SAS5529-001	8	292	VP	5	P8
SHERMAN AVE, N.	SAS5529-001	SAS5429-009	8	205	VP	1	P8
TRAILSWAY	SAS5429-009	SAS5429-008	8	325	VP	3	P8
SHERMAN AVE, N.	SAS5430-001	SAS5429-002	8	306	VP	4	P8
SHERMAN AVE, N.	SAS5429-002	SAS5429-001	8	308	VP	5	P8
SHERMAN AVE, N.	SAS5429-001	SAS5429-009	8	96	VP	2	P8
MONTEREY DR	SAS5429-019	SAS5429-004	8	310	VP	1	P9
TRAILSWAY	SAS5429-004	SAS5429-005	8	282	VP	2	P9
TRAILSWAY	SAS5429-005	SAS5429-024	8	318	VP	3	P9
TRAILSWAY	SAS5429-024	SAS5429-008	8	311	VP	2	P9
BRENTWOOD PKWY	SAS5430-019	SAS5430-018	8	189	VP	3	P9
BRENTWOOD PKWY	SAS5430-018	SAS5430-017	8	250	VP	5	P9
BRENTWOOD PKWY	SAS5430-017	SAS5429-018	8	248	VP	5	P9
BRENTWOOD PKWY	SAS5429-018	SAS5429-017	8	299	VP	9	P9
CALYPSO RD	SAS5430-015	SAS5430-016	8	230	VP	5	P9
CALYPSO RD	SAS5430-016	SAS5429-021	8	95	VP	2	P9
HUXLEY ST	SAS5633-020	SAS5634-001	12	34	RCP	0	P10
HUXLEY ST	SAS5634-001	SAS5634-002	12	239	RCP	1	P10
HUXLEY ST	SAS5634-002	SAS5634-003	12	254	RCP	0	P10
HUXLEY ST	SAS5634-003	SAS5634-004	12	178	VP	0	P10
HUXLEY ST	SAS5634-004	SAS5635-001	12	398	VP	4	P10
WINNEBAGO ST, YAHARA RIVER	SAS5644-022	SAS5644-014	18	82	CI	0	P11
WINNEBAGO ST, YAHARA RIVER	SAS5644-014	SAS5644-015	18	70	CI	0	P11
WINNEBAGO ST, YAHARA RIVER	SAS5644-015	SAS5644-003	18	154	CI	0	P11
WINNEBAGO ST, YAHARA RIVER	SAS5644-003	SAS5644-004	18	205	CI	0	P11
WINNEBAGO ST, YAHARA RIVER	SAS5643-004	SAS5543-040	18	364	CI	0	P11
WATFORD WAY	SAS4769-003	SAS4769-006	12	211	VP	0	P12
MOORLAND RD	SAS5569-004	SAS5570-001	12	350	RCP	0	P13
MOORLAND RD	SAS5570-001	MSDMH11-101	12	138	RCP	0	P13

13363	MADISON, WI	9440
13363	CIPP WET LINING REHAB OF SANITARY SEWERS - 2021	CONTRACT NO:
		
<p>13363</p> <p>D-1</p>		

F:\Encommon\Trenchless\2021 MH2MH\CAD\13363 Plans.dwg

13363

D-1



MARK	REVISION	DATE	BY
13363		2/20/2021 9:45 AM	
Designed By: KDF	Date: 2/20/2021 9:45 AM	Scale: #####	P-2

13363
 MADISON, WI
 CIPP WET LINING REHAB OF SANITARY SEWERS - 2021
 CONTRACT NO: 9440
 F:\Encommon\Trenchless\2021 MH2\MH\CAD\13363 Plans.dwg

UTILITY PLAN



13363
 P-2



CITY OF MADISON
 CHEROKEE SOUTH L.S. #5
 5121 COMANCHE WAY

MARK	REVISION	DATE	BY

13363
 MADISON, WI
 CONTRACT NO: 9440

UTILITY PLAN
 CIPP WET LINING REHAB OF SANITARY SEWERS - 2021
 F:\common\Trenchless\2021 MH2\MH\CAD\13363 Plans.dwg



13363
 P-3



MARK	REVISION	DATE	BY

13363
 MADISON, WI
 CONTRACT NO: 9440

UTILITY PLAN
 CIPP WET LINING REHAB OF SANITARY SEWERS - 2021
 F:\Encommon\Trenchless\2021 MH2\MH\CAD\13363 Plans.dwg





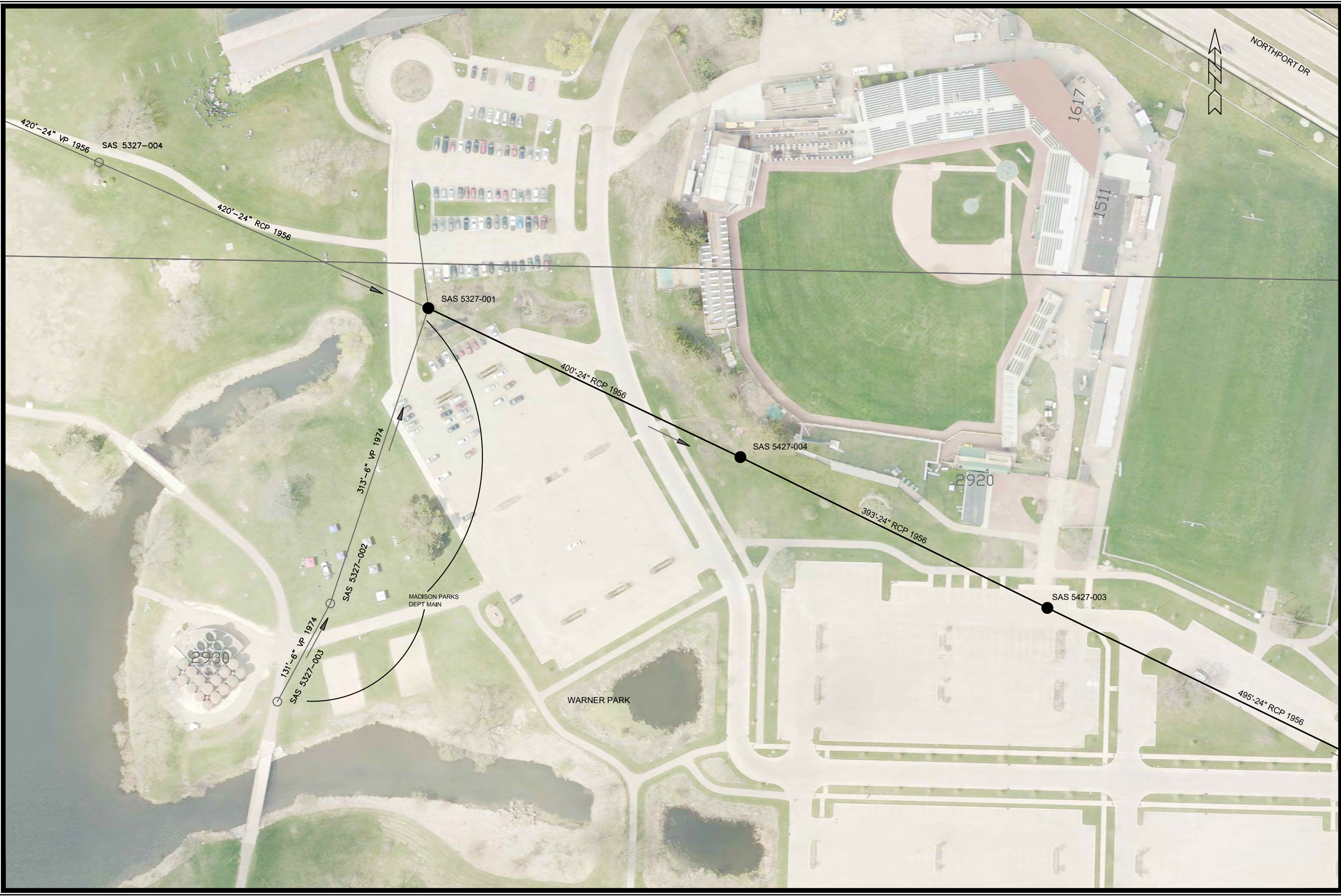
MARK	REVISION	DATE	BY
Designed By: KDF	Date: 2/20/2021 9:47 AM	Scale: #####	P-5
13363			

13363
 MADISON, WI
 CONTRACT NO: 9440

UTILITY PLAN
 CIPP WET LINING REHAB OF SANITARY SEWERS - 2021
 F:\common\Trenchless\2021 MH2\MH\CAD\13363 Plans.dwg



13363
 P-5



MARK	REVISION	DATE	BY
Designed By: KDF	Date: 2/2/2021 9:47 AM	Scale: #####	P-6
13363			

13363
 MADISON, WI
 CIPP WET LINING REHAB OF SANITARY SEWERS - 2021
 CONTRACT NO: 9440
 F:\Encommon\Trenchless2021 MH2\MH\CAD\13363 Plans.dwg

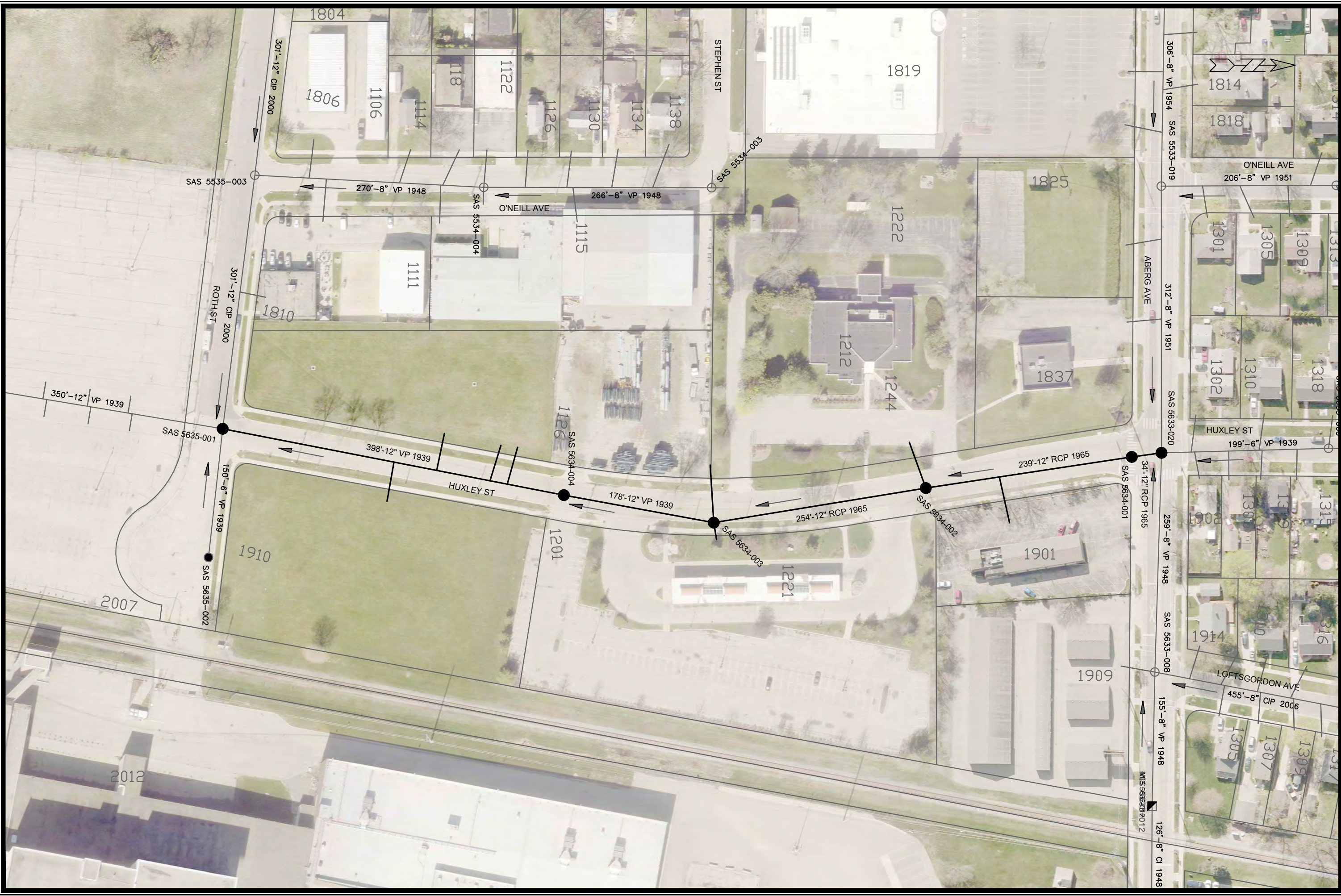




MARK	REVISION	DATE	BY
13363		2/2/2021 9:49 AM	
Designed By: KDF	Scale: #####		
			P-9

13363
 MADISON, WI
 CONTRACT NO: 9440
 UTILITY PLAN
 CIPP WET LINING REHAB OF SANITARY SEWERS - 2021
 F:\Encommon\Trenchless2021 MH2\MH\CAD\13363 Plans.dwg


 13363
 P-9



MARK	REVISION	DATE	BY

13363
 MADISON, WI
 CONTRACT NO: 9440

UTILITY PLAN
 CIPP WET LINING REHAB OF SANITARY SEWERS - 2021
 F:\Encommon\Trenchless\2021 MH2\MH\CAD\13363 Plans.dwg



13363
 P-10

Scale: #####
 Date: 2/2/2021 9:49 AM
 P-10



MARK	REVISION	DATE	BY
13363			
Designed By: KDF	Date: 2/2/2021 9:50 AM	Scale: #####	P-12

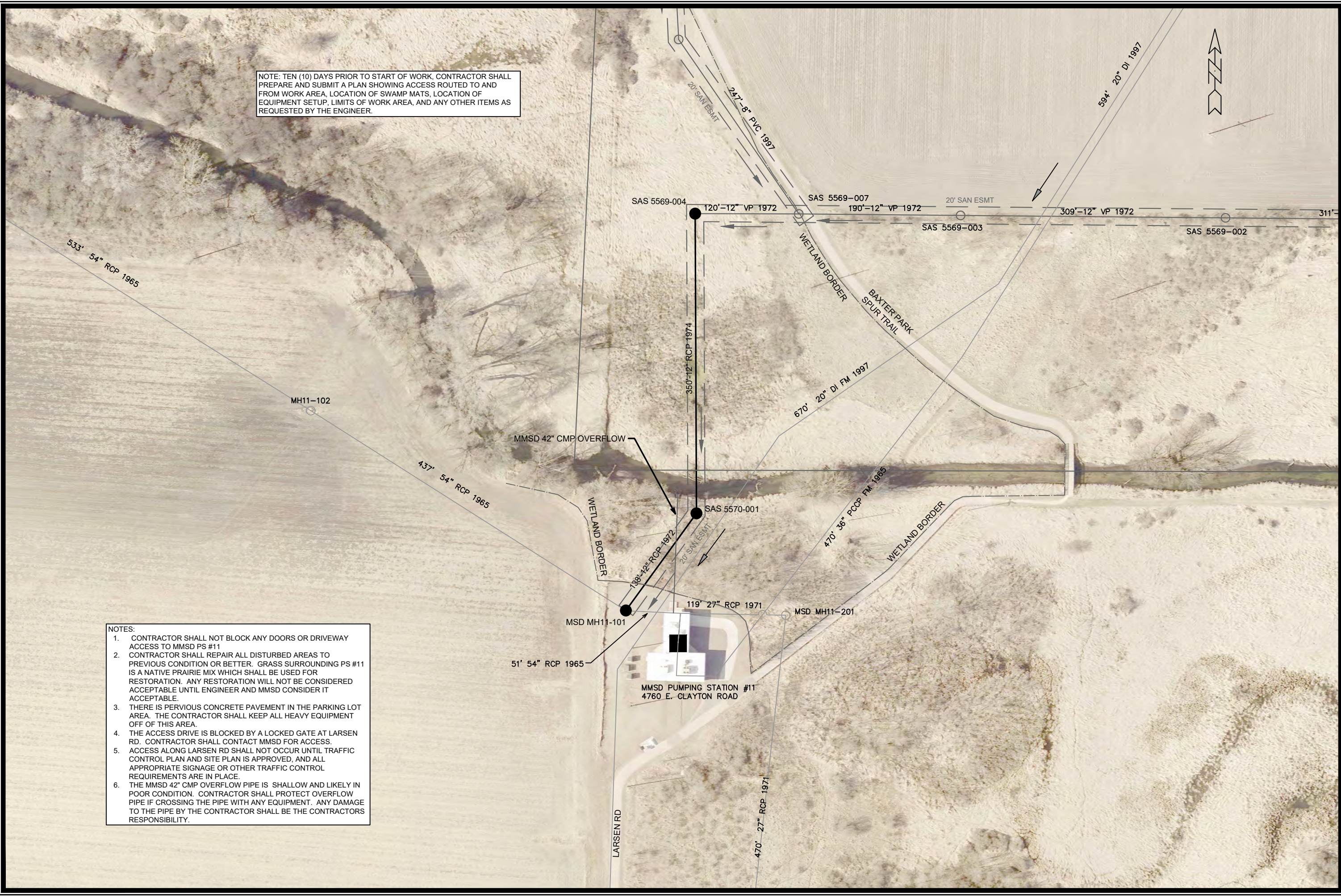
UTILITY PLAN
 13363
 CIPP WET LINING REHAB OF SANITARY SEWERS - 2021
 MADISON, WI
 CONTRACT NO: 9440
 F:\Encommon\Trenchless\2021 MH2\MH\CAD\13363 Plans.dwg



13363
 P-12

NOTE: TEN (10) DAYS PRIOR TO START OF WORK, CONTRACTOR SHALL PREPARE AND SUBMIT A PLAN SHOWING ACCESS ROUTED TO AND FROM WORK AREA, LOCATION OF SWAMP MATS, LOCATION OF EQUIPMENT SETUP, LIMITS OF WORK AREA, AND ANY OTHER ITEMS AS REQUESTED BY THE ENGINEER.

- NOTES:
1. CONTRACTOR SHALL NOT BLOCK ANY DOORS OR DRIVEWAY ACCESS TO MMSD PS #11
 2. CONTRACTOR SHALL REPAIR ALL DISTURBED AREAS TO PREVIOUS CONDITION OR BETTER. GRASS SURROUNDING PS #11 IS A NATIVE PRAIRIE MIX WHICH SHALL BE USED FOR RESTORATION. ANY RESTORATION WILL NOT BE CONSIDERED ACCEPTABLE UNTIL ENGINEER AND MMSD CONSIDER IT ACCEPTABLE.
 3. THERE IS PERVIOUS CONCRETE PAVEMENT IN THE PARKING LOT AREA. THE CONTRACTOR SHALL KEEP ALL HEAVY EQUIPMENT OFF OF THIS AREA.
 4. THE ACCESS DRIVE IS BLOCKED BY A LOCKED GATE AT LARSEN RD. CONTRACTOR SHALL CONTACT MMSD FOR ACCESS.
 5. ACCESS ALONG LARSEN RD SHALL NOT OCCUR UNTIL TRAFFIC CONTROL PLAN AND SITE PLAN IS APPROVED, AND ALL APPROPRIATE SIGNAGE OR OTHER TRAFFIC CONTROL REQUIREMENTS ARE IN PLACE.
 6. THE MMSD 42" CMP OVERFLOW PIPE IS SHALLOW AND LIKELY IN POOR CONDITION. CONTRACTOR SHALL PROTECT OVERFLOW PIPE IF CROSSING THE PIPE WITH ANY EQUIPMENT. ANY DAMAGE TO THE PIPE BY THE CONTRACTOR SHALL BE THE CONTRACTORS RESPONSIBILITY.



MARK	REVISION	DATE	BY
13363		2/20/2021 9:51 AM	
Designed By: KDF	Scale: #####		

13363
MADISON, WI
CONTRACT NO: 9440

UTILITY PLAN
CIPP WET LINING REHAB OF SANITARY SEWERS - 2021
F:\Encommon\Trenchless\2021 MH2\MH\CAD\13363 Plans.dwg



13363
P-13